

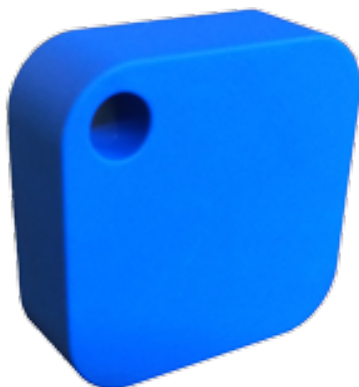


# PlaceIBS/BMS QuickStart Guide

Documentation: PlaceIBS/PlaceBMS QuickStart

Version: 1.2

May 12, 2015



## PLACEIBS/PLACEBMS QUICKSTART GUIDE

This 4-Step QuickStart Guide is designed to configure a beacon with a URL redirect and minimal configuration. Please refer to PlaceBMS User Manual to maximize and customize your config options.

### Step 1: Login

- You should have a private PlaceBMS or PlaceBMS website URL, a username, and a password. **Please login.**



### Step 2: Create a Location

- Go to **Locations** menu (see menu screenshot above). You will add a location where you may have one or many beacons that exist within a location. Click **Add Location**:



- Enter a location **Name**, and an **Alert Notification** of your choosing. Leave **Welcome poi** field blank. You will not have welcome point of interest content for this quick beacon set-up.

**Name**  
1st Floor

**Alert Notification**  
Please open your PlaceApp

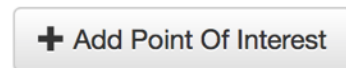
Alert message when first encountering any beacon at this location.

- Click the **Save** button:



### Step 3: Create a Point of Interest (poi)

- Go to **Points of Interest** menu (see menu screenshot). You will add a point of interest where you will create content for a beacon. Click **Add Point of Interest**:



- Enter a **Name**, and select "External URL" for **Display Type**. Once selected, an **External URL** field will appear. Enter URL: "<http://www.apple.com>". IF you want, upload a **Thumbnail** image no greater size than 160x160 pixels.


**Display Type**  
External URL

- Click the **Save** button:



**External URL**  
<http://www.apple.com>

### Step 4: Configure a Beacon

- Go to **Beacons** menu (see Menu screenshot). Choose one. Click the edit icon  to select a beacon.
- Select the **Location** and **Point of Interest** (poi) you just created in the pop down selection fields:

**Location**  
1st Floor (US/Pacific)

- Click the **Save** button:



**Point of Interest**  
Apple URL

- Launch **PlaceApp** on your device to view your new URL redirecting beacon!